

Reflex Systems and Arista Networks

Reflex Systems and Arista Networks partner to provide customers with seamless management, infrastructure, security and network policy enforcement and automation within the virtualized data center, leveraging Reflex VMC virtualization management suite and Arista VM TRACER

Together, Reflex and Arista provide unprecedented visibility and a level of interoperability between the virtual and physical infrastructure to optimize and manage the virtual enterprise. The joint solution combines the award-winning technologies of Reflex VMC and the Arista 7000 switch series and offers a network centric view of virtualization to address the challenges of securing and managing the next generation virtualized data centers and cloud infrastructure while meeting compliance regulations. The joint solution represents a blend of Arista's networking expertise with Reflex's virtualization security and management expertise, and it was designed specifically to help customers gain greater visibility into the virtual infrastructure and maintain configuration and compliance holistically.

This integrated solution also enables virtualization and networking teams to independently manage the virtualization environment through enforcement and automation of business, security, networking, and infrastructure policies.

Reflex and Arista enable enterprises to:

- Integrate networking services with robust management and security
- Manage and enforce dynamic business, IT & security policies
- Ensure security, compliance and audit requirements
- Expand virtualization with flexibility & scalable technology
- Enable independent management for virtualization and networking teams
- Extend the physical network into virtualization and manage and enforce security policies in the cloud

Reflex Systems VMC

Reflex's award-winning Virtualization Management Center (VMC) enables next generation data centers to enforce business, IT and security policies, ensure compliance with government mandates, and manage and protect virtual servers, desktops, and networks across data center and private/public cloud environments.

Reflex's VMC, integrated vWatch, vTrust and vProfile technologies, is designed to provide customers with the essential management capabilities needed to effectively manage and secure the complex, dynamic virtual environment, capitalize on the existing virtualization investment, reduce cost through efficient management, minimize downtime and maintain a reliable virtualized infrastructure running critical business applications. VMC integrates security, compliance, audit and management of the virtual environment by providing visibility, correlation, control and automation through a single pane of glass.

Arista Networks VM Tracer

Arista Networks provides visibility into the virtualized environment, seamless integration using the familiar industry-standard CLI, and automatic configuration of tasks and policy by integrating natively with VMware vCenter. Arista provides visibility into the vSwitch, the VM farm, and policy control that is natively integrated with VMware's vCenter, as well as a dynamically responsive network within the virtualized environment.

The combination of vEOS, VM Tracer and the Arista 7000 Family enables physical network and virtualization operators as well as private and public cloud systems to seamlessly migrate virtual machines across network, server, and organizational boundaries with consistent policy and accounting. It is a dramatic departure from the silos of today as workloads can now migrate from physical to virtual to cloud networking.

Reflex Systems and Arista Networks

Integrated Virtualization Network Visibility and Management

Network Centric Interface

Physical-to-Virtual Visibility

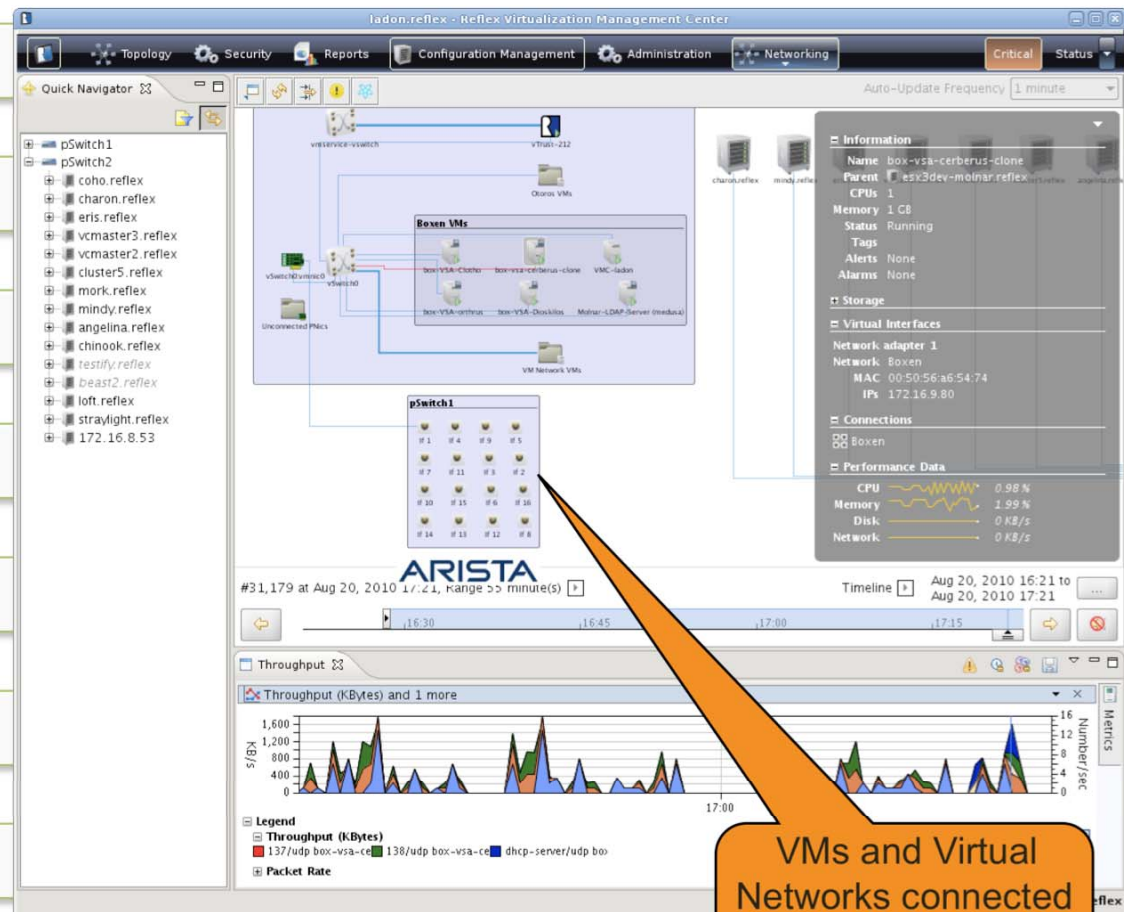
Compliance & Policy

Configuration Management

Virtual Flow Data

Historical tracking

Root-cause Analysis



VMs and Virtual Networks connected to Arista physical switch