

7800 Fabric Module Installation Guide

May 2025

78-0301-04

Purpose

This presentation documents the safe installation of fabric modules in the 7800 Series chassis.

Improper installation can cause damage to the fabric modules, line cards and the chassis, while also risking damage to other modules already installed in the system.

After inspecting your modules for damage, this simple 4 step process should be strictly followed.

Fabric Module Overview

7804 Fabric
Module

(R4 shown)



FAN-7800-HS
For 7800R4 Systems



7812 Fabric
Module

(R4 shown)

7808 Fabric
Module*

(R3 shown)



FAN-7802-H
For 7800R3 Systems



7816L Fabric
Module

(R3 shown)

*The 7816 fabric module layout is similar to the 7808

Proper Fabric Module Installation - Ejector Features

The Fabric Module Ejector levers can exert a tremendous amount of force on the chassis that can cause damage which will require the chassis to be taken out of service

Here are some key features of the injector/ejector system to be aware of when inserting and injecting the fabric modules into the rear of a 7800 Series Chassis



Fabric Module w/ Upper and Lower Ejector Levers

Injector Claws
2 per ejector

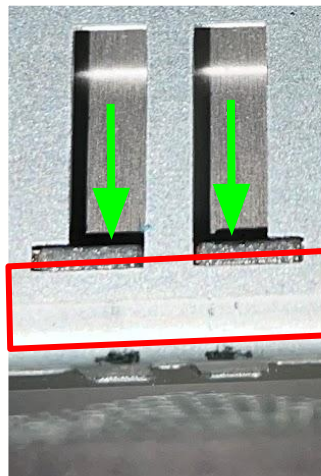
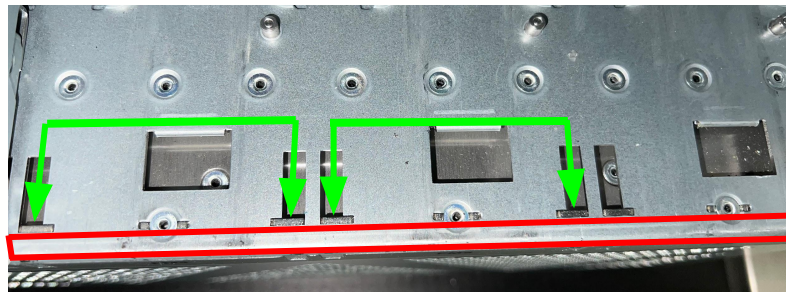
Ejector Claws
2 per ejector



Proper Fabric Module Installation - Chassis Leverage Features

In FM side of the chassis is a hardened steel leverage bracket that is designed to withstand the force that the inject claws are capable of exerting during the installation of the FM.

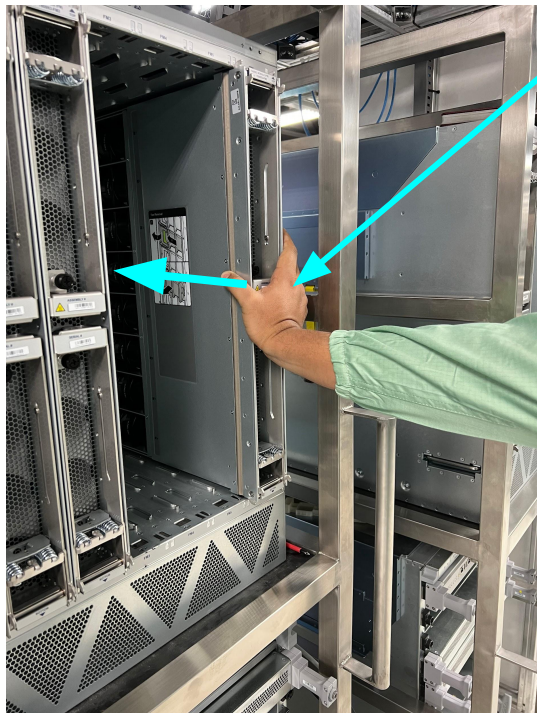
The inject claw should pull against the inside face of the leverage bracket, as indicated by the GREEN arrows. If the inject claws land in the RED zone, damage may occur that can bend the chassis structure and compromise the ability to properly insert fabric modules.



See page 9 for examples of damage caused by improperly installed FM's

Proper Fabric Module Installation - STEP 1

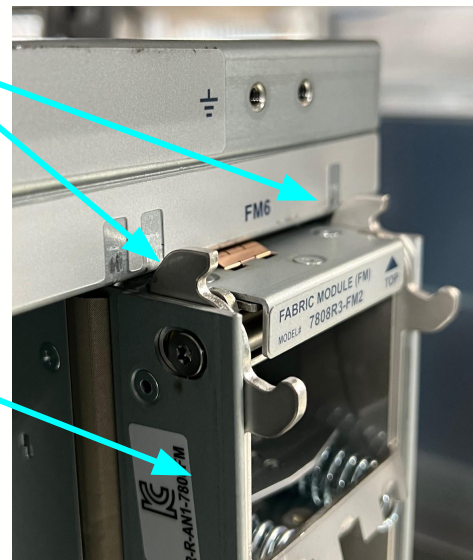
The Fabric Module (FM) is inserted into the rear of the 7800 Chassis with the injector/ejector levers in the **closed** position. The operator should push the front of unit into the chassis until the injector claw is touching the rear face of the chassis



Operator pushing FM into the chassis until the injector claw stops against rear face of chassis

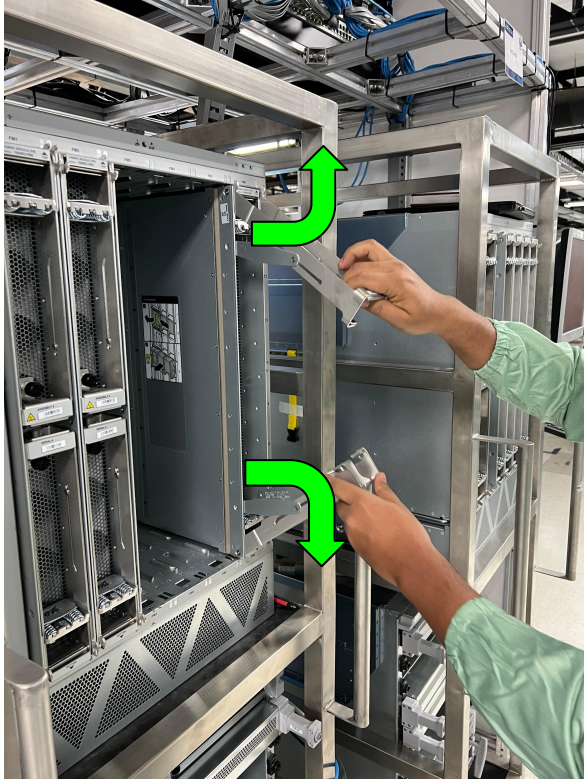
Injector Claw touching rear face of the chassis

Injectors are closed



Fabric Module Installation Instructions - STEP 2

Rotate the injector/ejector levers outward 90 degrees into their fully open position.



Fabric Module Installation Instructions - STEP 3

With the ejectors in the open position, push against the front face of the FM until it comes to a stop with the ejector claws touching the rear face of the chassis

Ejector Claw touching rear face of the chassis



Fabric Module Installation Instructions - Step 4

In unison, rotate the ejector levers inward to mate the FM, then secure the panel fasteners using a PH3 driver on a battery operated screwdriver to lock the FM into place. Torque to be set at 10 in-lbs (1.13 Nm)



Secure panel fasteners with torque screwdriver

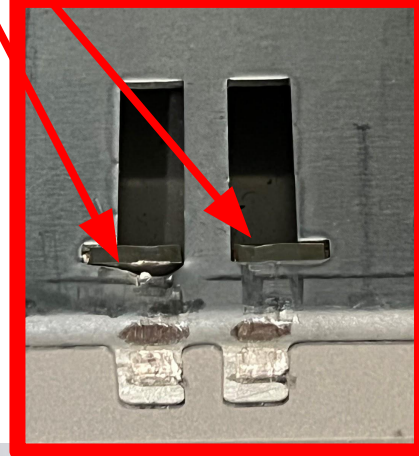
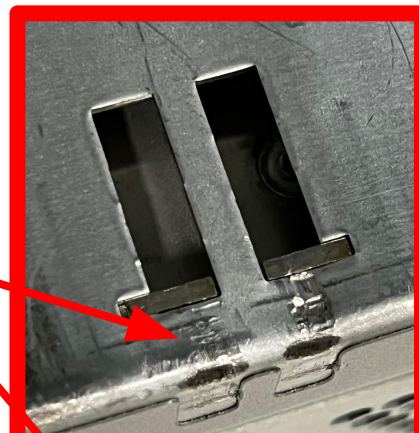
Damage Caused to Chassis by Improper Installation of FM



The leverage feature in the chassis should appear like this

Damage to chassis

Compromised leverage features, pushed into chassis opening



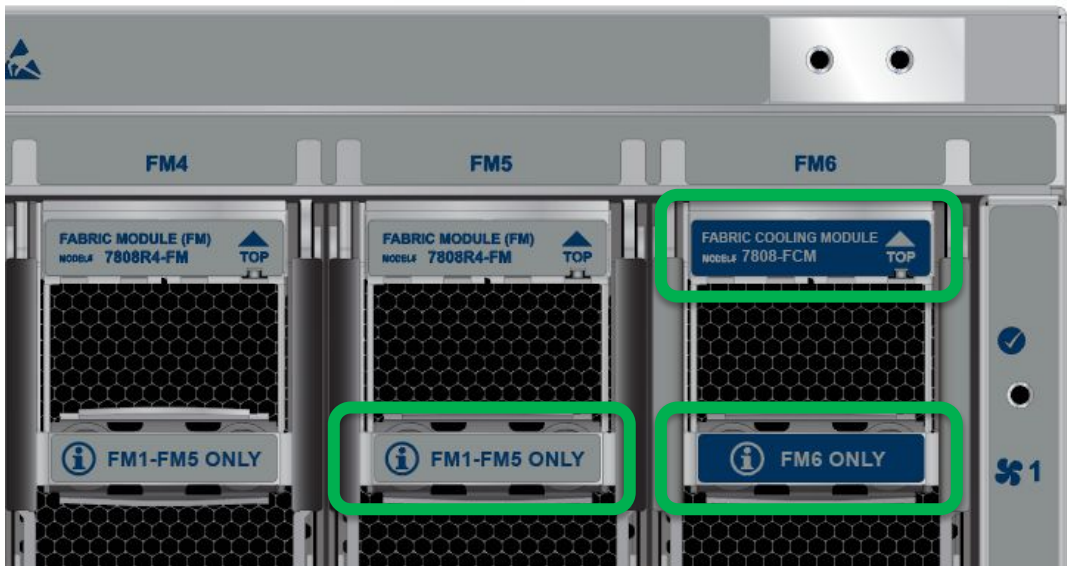


7800R4 Series

7800R4 Series Fabric Architecture

R4 Series Uses 5 Fabric Modules

- Fabric Modules **only** in slots 1-5
 - 7804/7808/7812/7816L
- Slot 6 reserved for cooling module
 - FCM = Fabric Cooling Module
 - FCM is required for operation
- FMs and FCMs color coded
 - Labels identify the correct slots



7800R4 Series Fabric Architecture



Fabric Module



Fabric Cooling Module



Thank You

www.arista.com